

NSE Antibody
Purified Rabbit Polyclonal Antibody (Pab)
Catalog # AP50004**Specification**

NSE Antibody - Product Information

Application	WB, IF, IHC
Primary Accession	P09104
Reactivity	Human, Mouse, Rat
Host	Rabbit
Clonality	Polyclonal
Calculated MW	47 KDa
Antigen Region	392-425

NSE Antibody - Additional Information**Gene ID** 2026**Other Names**

Gamma-enolase, 2-phospho-D-glycerate hydro-lyase, Enolase 2, Neural enolase, Neuron-specific enolase, NSE, ENO2

Dilution

WB~~ 1:1000

IF~~1:100

IHC~~1:50-1:100

FormatRabbit IgG in phosphate buffered saline (without Mg²⁺ and Ca²⁺), pH 7.4, 150mM NaCl, 0.09% (W/V) sodium azide and 50% glycerol.**Storage Conditions**

-20°C

NSE Antibody - Protein Information**Name** ENO2 ([HGNC:3353](#))**Function**

Enolase that catalyzes the conversion of 2-phosphoglycerate to phosphoenolpyruvate in glycolysis and the reverse reaction in gluconeogenesis (By similarity). Has neurotrophic and neuroprotective properties on a broad spectrum of central nervous system (CNS) neurons. Binds, in a calcium-dependent manner, to cultured neocortical neurons and promotes cell survival (By similarity).

Cellular Location

Cytoplasm. Cell membrane. Note=Can translocate to the plasma membrane in either the homodimeric (alpha/alpha) or heterodimeric (alpha/gamma) form

Tissue Location

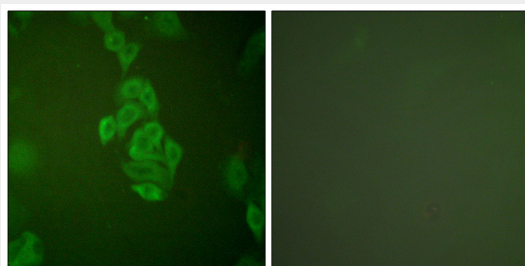
The alpha/alpha homodimer is expressed in embryo and in most adult tissues. The alpha/beta heterodimer and the beta/beta homodimer are found in striated muscle, and the alpha/gamma heterodimer and the gamma/gamma homodimer in neurons

NSE Antibody - Protocols

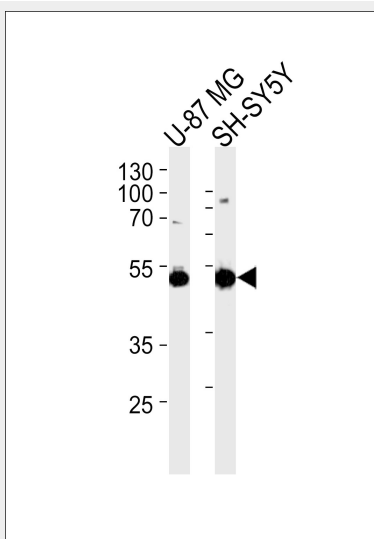
Provided below are standard protocols that you may find useful for product applications.

- [Western Blot](#)
- [Blocking Peptides](#)
- [Dot Blot](#)
- [Immunohistochemistry](#)
- [Immunofluorescence](#)
- [Immunoprecipitation](#)
- [Flow Cytometry](#)
- [Cell Culture](#)

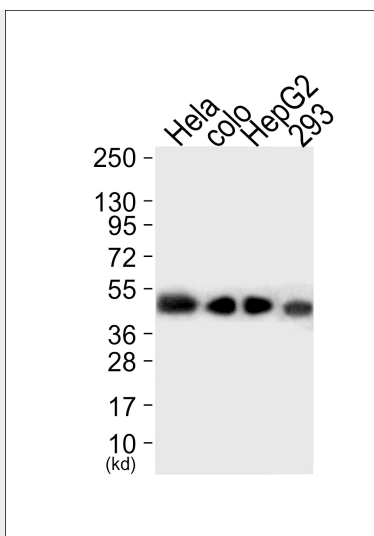
NSE Antibody - Images



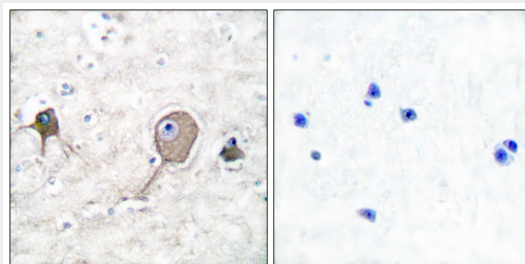
Immunofluorescence analysis of A549 cells, using NSE antibody .



Western blot analysis of lysates from U-87 MG, SH-SY5Y cell line (from left to right), using NSE Antibody (C0280). C0280 was diluted at 1:1000 at each lane. A goat anti-rabbit IgG H&L (HRP) at 1:5000 dilution was used as the secondary antibody. Lysates at 35 µg per lane.



Western blot analysis of extracts from HeLa cells (Lane 1), colo cells (Lane 2), HepG2 cells (Lane 3) and 293 cells (Lane 4), using NSE Antibody. The lane on the left is treated with synthesized peptide.



Immunohistochemical analysis of paraffin-embedded human brain tissue using NSE antibody .

NSE Antibody - Background

Has neurotrophic and neuroprotective properties on a broad spectrum of central nervous system (CNS) neurons. Binds, in a calcium-dependent manner, to cultured neocortical neurons and promotes cell survival (By similarity).

NSE Antibody - References

- McAleese S.M., et al. Eur. J. Biochem. 178:413-417(1988).
- van Obberghen E., et al. J. Neurosci. Res. 19:450-456(1988).
- Oliva D., et al. Gene 79:355-360(1989).
- Oliva D., et al. Genomics 10:157-165(1991).
- Ansari-Lari M.A., et al. Genome Res. 7:268-280(1997).